

Exchange@NUS



Global

AN INTRODUCTION TO STUDYING AT THE NATIONAL UNIVERSITY OF SINGAPORE

Singapore is an island city-state, located in the heart of Asia. The island republic is recognised as a global business hub with its developed infrastructure, political stability and open business policy. Its tropical climate, easy accessibility, safe and green environment attract business and leisure travellers alike.

Singapore's shiny façade belies a rich history and a unique blend of Malay, Chinese, Arab and Western foods and cultures. There's so much to discover in this incomparable country!

Welcome to Singapore



Average Temperature

It's a balmy 25°C - 32°C all year around! You'll want to slap on some sunscreen.



Highest Rainfall

Get those brollies ready from November to January, or enjoy our tropical thunderstorms indoors.



Size

Singapore is 50km from West to East and 27km from North to South. Just enough space for the yearly F1 night race!

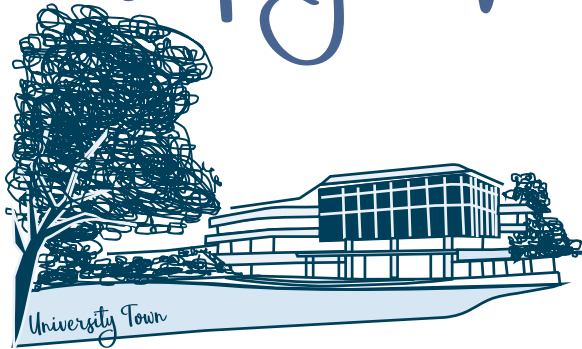


Languages

Most locals are fluent in English, and are bilingual! Go ahead and test their Mandarin, Bahasa Melayu or Tamil!

A LEADING GLOBAL UNIVERSITY

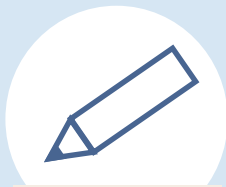
shaping the future



Founded in 1905, NUS' rigorous education, research, innovation and entrepreneurship have produced generations of leaders and luminaries.

As Singapore's flagship university, we welcome more than 2,300 international exchange students every year. Centred in Asia, we are one of the best places to be if you want to learn more about this exciting region.

CHOOSE TO STUDY AT **6** DIFFERENT SCHOOLS/FACULTIES



ARTS &
SOCIAL SCIENCES



COMPUTING



SCIENCE



DESIGN &
ENGINEERING



*BUSINESS



*LAW

**Applications for the Business & Law exchange programmes are by invitation only.*

Enrolment in specific courses is not guaranteed, so please be flexible in your choices.

Courses available: nus.edu/3tGsEvc

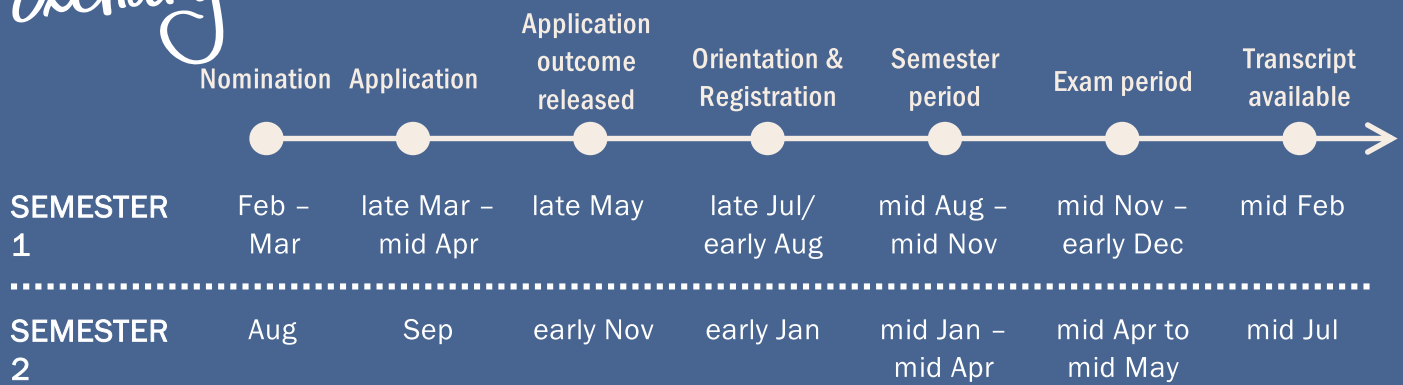
Course restrictions: nus.edu/3E5iEjC

Course description: nusmods.com/timetable (check that you select the right semester)

Eligibility

1. Be nominated as a Non-Graduating Exchange student from an NUS exchange partner university: nus.edu/3iHkFHM
2. Have at least a "B" average, with no grade lower than a "C"
3. Complete at least 1 year of undergraduate study at your home university
4. Be proficient in English
5. Have the financial means to support your stay at NUS

Exchange timeline



PREPARING YOUR Application

Here are some things to take note of in your application to NUS:



You need a minimum of 12 units for admission into NUS



You are allowed to read a maximum of 20 units worth of courses



Select the correct level of courses:
1000 – 3000: Undergraduate courses
4000: Honours courses
5000 – 6000: Not open to exchange students



Ensure that you meet the course pre-requisites

We strongly recommend that you select **up to 40 units worth of courses** in your application. For courses that require pre-requisites, include the syllabi of the courses that you have completed or are currently taking. If you want to take design-related courses, you must upload a letter from your home university stating the year of design courses you should be enrolled in during your exchange.

To access the application portal, register for a new user account using your **university email address**. Before proceeding with your application, please read the NUS Online Application Portal Guide: nus.edu/36TSuCW



A CLOSER LOOK INTO



1. Courses are typically worth 4 units each, which equates to about 10 hours of preparation and class work each week.
2. You must be accepted in at least 12 units worth of courses before you will receive an acceptance letter.
3. Please note that courses in Architecture, Computer Science, Civil Engineering, and Economics are in high demand, and places are limited.
4. You can make modifications to your Study Plan after receiving your acceptance letter, during Course Registration (CourseReg). Please ensure that you have sought your university's approval for any changes to your Study Plan before CourseReg. The schedule for CourseReg can be found in the Non-Graduating Registration Guide: nus.edu/3J2qtcx

Pre-arrival Webinar & Registration

You are **strongly encouraged to attend** Registration, which is usually conducted 1 to 2 weeks before the start of the semester. We advise you to complete all necessary exams at your home university before coming to NUS.



REGISTRATION

You will collect your NUS Student Card and complete the enrolment for your Student's Pass (student visa) on-campus at Registration.

If you are unable to arrive on time for Registration, please inform the Office of University Registrar: bit.ly/41oWsu0

Visa Matters (!)

You will need to obtain a Student's Pass (student visa) to study at NUS. The Office of University Registrar will email instructions on applying for your Student's Pass at least one month before the start of the semester. You will collect your Student's Pass after you arrive in Singapore, but you will need to complete a few steps online prior to your arrival.



If you require a visa to enter Singapore, you can print the In-Principle Approval (IPA) letter via the STP Application System, and use the IPA as a **single-trip entry visa**. If you are not from a visa-required country, you may enter Singapore on a tourist visa and convert the visa to a Student's Pass. For details, please refer to the Non-Graduating Registration Guide: nus.edu/3J2qtcx



WHAT TO EXPECT Upon Arrival

Singapore is well-connected by public transport, and NUS is easily accessible. Find out how to get to NUS here: nus.edu/3Lm1j7E

Also, look forward to welcome events and activities hosted by the Office of Student Affairs and NUS Global! Look out for emails about these events and visit: nus.edu/3MW0gvC

Changi Airport



On-Campus Accommodation



Halls of Residence

- Compulsory meal plan
- Vibrant activities



Residential Colleges

- Compulsory meal plan
- Integrated learning & living environment



Student Residences

- Independent living
- More privacy

As on-campus accommodation is **limited** and **not guaranteed**, we encourage you to seek off-campus accommodation options concurrently. If you would like to apply for on-campus accommodation, please indicate this on your exchange application to receive application instructions with your admissions offer.

Room types: nus.edu/3uw1Z3o

Room rates: nus.edu/3qlayqG

Housing Application Guide: nus.edu/36GIK06

Off-campus accommodation: nus.edu/3wKwvsV

Health & Wellness



As an international student, you must enrol in a compulsory NUS Health and Insurance Scheme, which is included in the Miscellaneous Student Fees.

Insurance coverage:
nus.edu/37YgJ3k

Miscellaneous Student Fees:
nus.edu/35isock



The NUS community is served by the University Health Centre (UHC) at Kent Ridge campus. NUS' University Counselling Services also provides counselling and other related services.

If you will require medical support or learning accommodations during your time at NUS, please indicate this in your exchange application.

NUS healthcare services: nus.edu.sg/uhc
NUS Student Accessibility Unit:
nus.edu/3YLM8wu

Campus life

No matter your interests, NUS has something for you!

>200

student organisations,
societies & interest groups

>40

sports teams

>20

groups in music, dance,
drama & visual arts

EXCHANGE IN A Crazy Rich City?



Although touted as one of the most expensive cities in the world, living in Singapore can be very affordable and comfortable. Here's a breakdown of expected **monthly** expenses (in Singapore dollars):

	On-campus	Off-campus
Accommodation	\$500 - \$900 (depending on room type)	\$650 - \$1,800
Food (3 meals a day)	\$300 - \$500	\$400 - \$800
Public transport	\$100 - \$200	\$200 - \$300
Personal expenses	\$300 - \$500	
Total (in SGD)	\$1,200 - \$2,100	\$1,550 - \$3,400

These figures are estimates to serve as a guide, and do not include travel expenses. As on-campus accommodation at NUS is not guaranteed, you should plan for the possibility that you may reside off-campus during your time here. As an exchange student on a Student's Pass, you are not allowed to work or intern in Singapore.

CONTACT INFORMATION:

GENERAL ENQUIRIES



nus.edu/3JQINDT



bit.ly/44npbkr

APPLICATION & REGISTRATION



nus.edu/3qIhMLk



bit.ly/41oWsu0

USEFUL LINKS:

- Academic Calendar:
- Non-Graduating (NG) Programme:
- Information for Inbound Exchangers:
- Online Application Portal Guide:
- List of Courses
- Course Restrictions:
- Timetable Builder & Knowledge Platform:
- Student Insurance:
- Singapore Immigration & Checkpoints Authority

- nus.edu/3LivwUM
- nus.edu/3qIhMLk
- nus.edu/3JQINDT
- nus.edu/36TSuCW
- nus.edu/3tGsEvc
- nus.edu/3E5iEjC
- nusmods.com
- nus.edu/37YgJ3k
- ica.gov.sg/enter-transit-depart

Scan for an e-copy!

